



CENTRAL INSTITUTE OF BRACKISHWATER AQUACULTURE

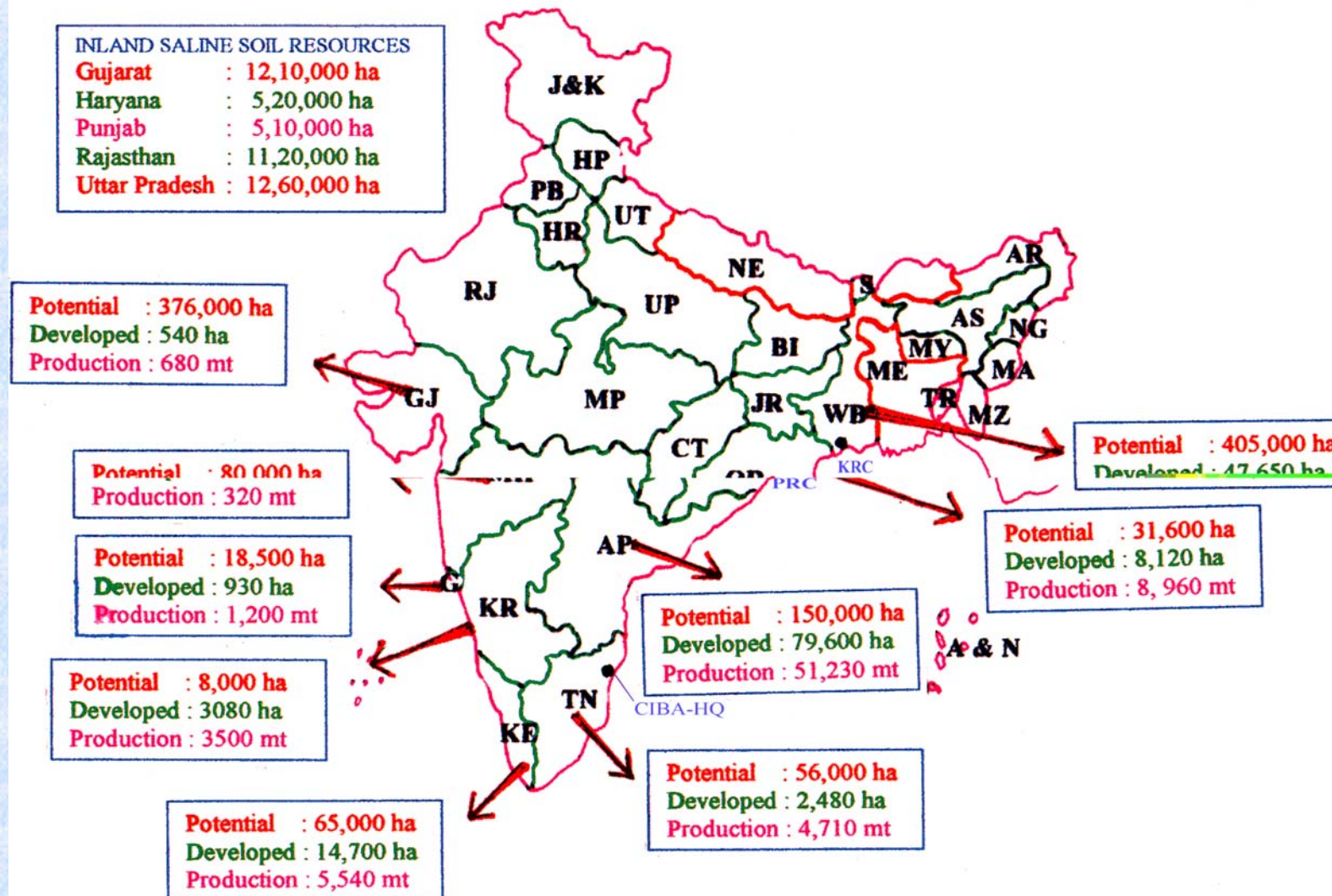
(INDIAN COUNCIL OF AGRICULTURAL RESEARCH)

	STRENGTH
SCIENTIFIC	45
TECHNICAL	31
Field facilities	39.3 + 13.6 ha
Laboratories	5

MANDATE

- **Conduct basic, strategic and applied research in brackishwater aquaculture.**
- **Provide research support for diversification of brackishwater aquaculture practices with reference to species and systems.**
- **Provide policy and planning support for socio-economic development through brackishwater aquaculture.**
- **To carry out transfer of brackishwater aquaculture technologies through creation of awareness, conducting training and providing consultancy service.**

Map of India Showing the Coastal Brackishwater Resources and Inland Saline Areas



BRACKISHWATER AQUACULTURE – PRESENT STATUS (2005)



Synonymous with shrimp farming – diversification into fish and crab negligible

Area under farming - 1,84,115 HA

Culture shrimp production - 1,85,990 MT

Shrimp exports -Value(% total seafood)-3,545 Crores(47 %)

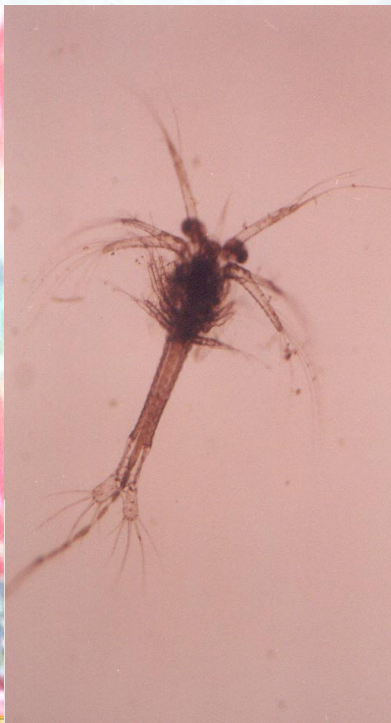
● Development of technology for improved traditional system of farming with a production of 1.2 tonnes of *P. monodon* /ha/100 days

● Demonstration of improved traditional system of culture of *P. monodon* in pokkali fields of Kerala



- *F. merguensis* and *M. japonicus*

**CLOSING RISK ASSESSMENT OF *M. JAPONICUS* UNDER CAPTIVE
CONDITIONS AND PRODUCTION OF F5 GENERATION BROODSTOCK**



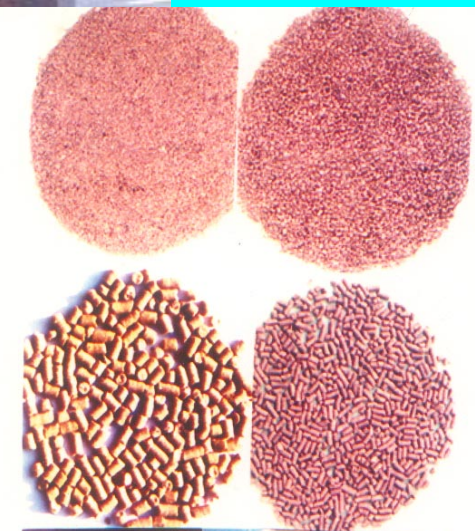
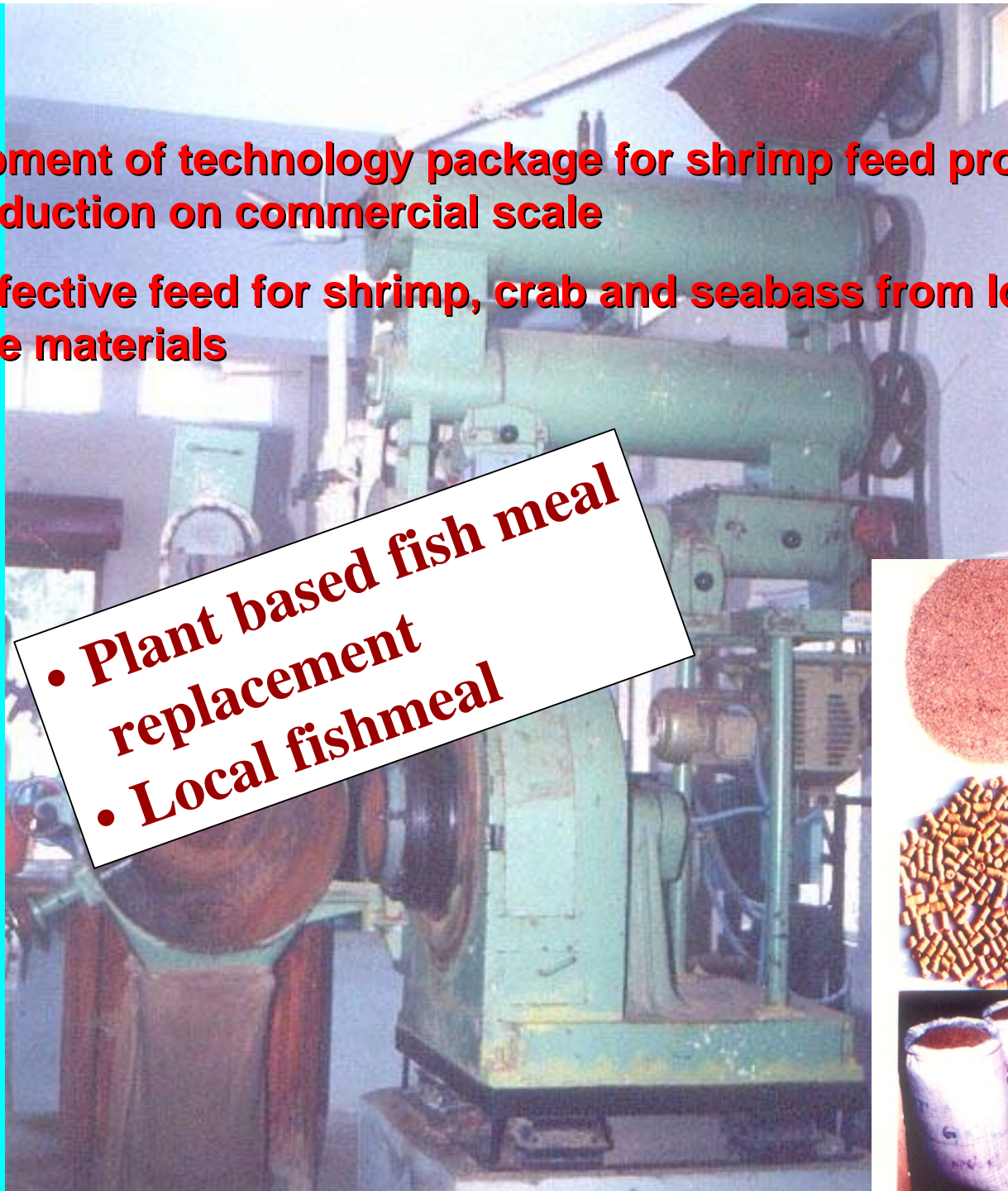
● Domestication & seed production of *Lates calcarifer*

- Culture field trials -seabass
- Seed production
- Mullet
- Milkfish



- **Development of technology package for shrimp feed processing and production on commercial scale**
- **Cost effective feed for shrimp, crab and seabass from locally available materials**

• **Plant based fish meal replacement**
• **Local fishmeal**



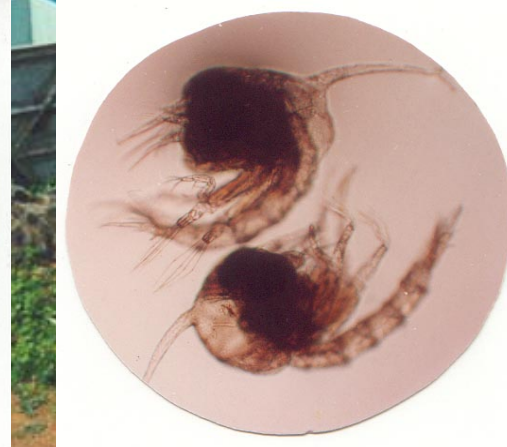
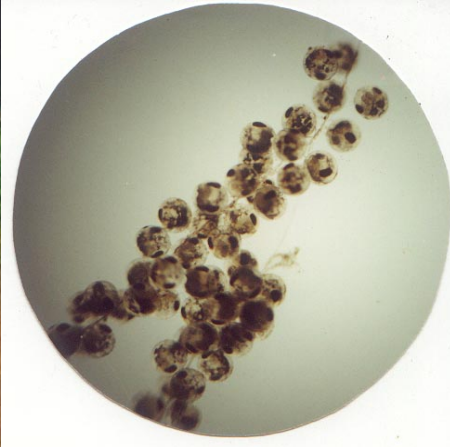



- **Nested PCR diagnostic kit for shrimp white spot virus and launching**
- **Rapid diagnostic kit for white muscle disease in *Macrobrachium rosenbergii***
- **Extensive investigations on the white spot virus disease**
- **Field testing of immunostimulant for *Penaeus monodon***



Captive broodstock maintenance, induced maturation , breeding and completion of life cycle of *Scylla tranquebarica* and *S. serrata*

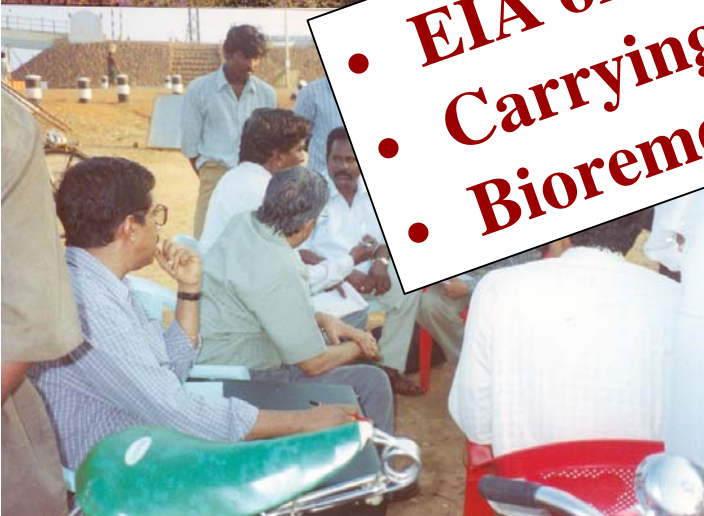
Culture field trials





• Extensive investigations on the socio-economic and environmental impacts of shrimp farming in Andhra Pradesh, Orissa, West Bengal and Tamil Nadu

- EIA of shrimp culture
- Carrying capacity model
- Bioremediation





**Integrating small holder into
value chain**

Socio-economics and shrimp farming practices under different systems to study the problems and constraints of technology adoption faced by the shrimp farmers

TRANSFER OF TECHNOLOGY

EXHIBITION

- Extension approaches
- Aquaclinics, aquabusiness and
- Village knowledge centers

FARMERS' MEET-CHIDHAMBARAM

FARMERS' MEET- KALPAKKAM

FARMERS' MEET - NAGAI

TRAINING

NATP – INSTITUTE VILLAGE LINKAGE PROGRAMME - KATTUR



Women self help groups



NEW INITIATIVES

- **Development of captive broodstock & Genetic improvement of *P. monodon***
- **Resource assessment and aquaculture planning through remote sensing and GIS**
- **Inland Saline Water Aquaculture**

THANK YOU

